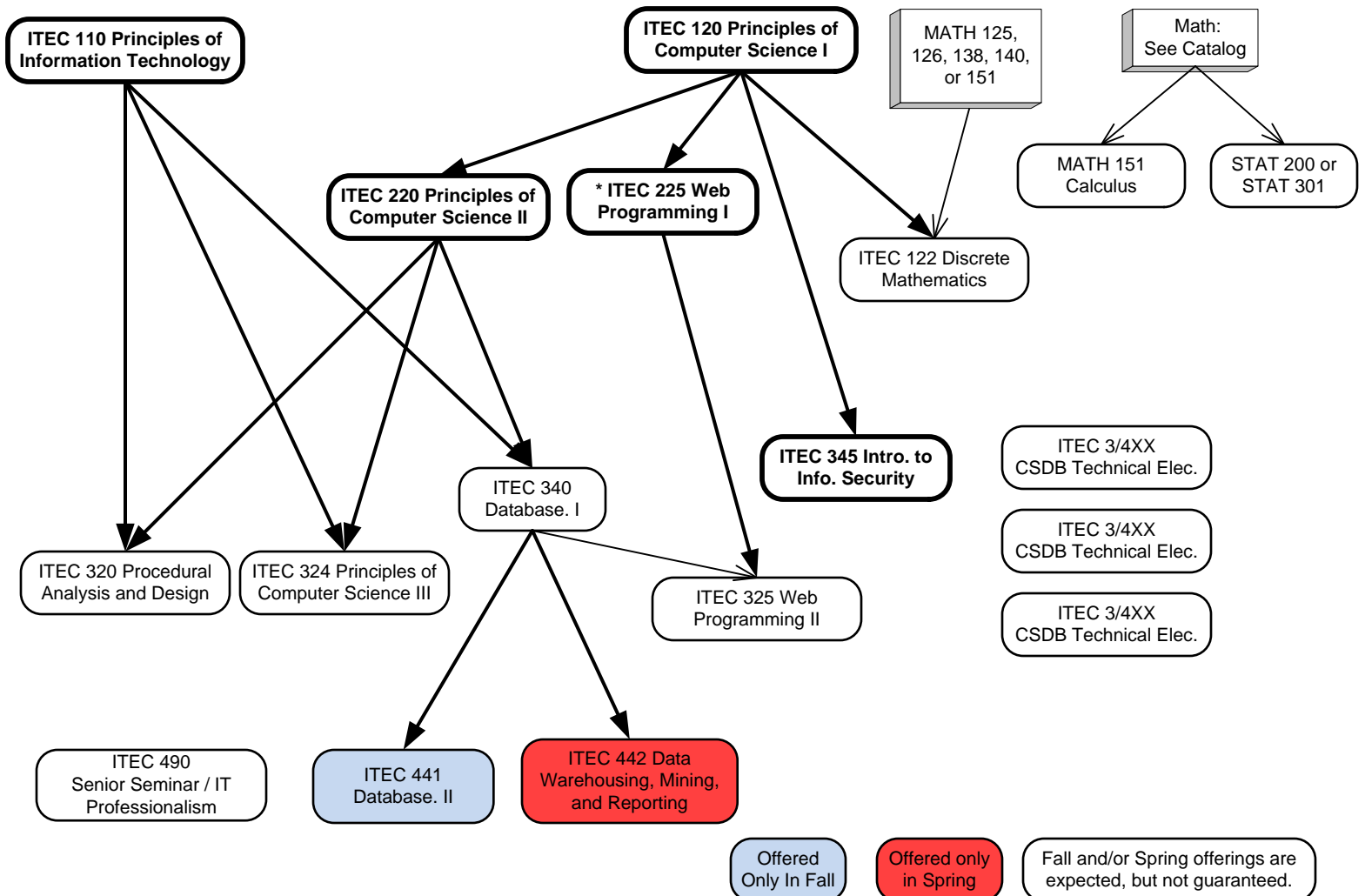


Database Concentration 2015 – 2016



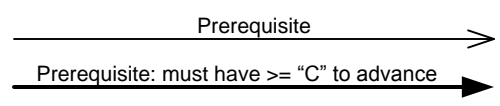
CSDB Technical Electives: Plus 9 additional credit hours chosen from any 300 or 400-level ITEC courses (except ITEC 301, ITEC 304, ITEC 307, ITEC 381, ITEC 398, ITEC 493, or ITEC 498) or any 500 or 600-level courses approved by the Department Chair.

B.S. Requirements (6-8 credits):
 Two courses from the following list: Any 300 or 400-level or above ITEC course (except ITEC 301, ITEC 304, ITEC 307, ITEC 381, ITEC 398, and ITEC 498) or any 500 or 600-level courses approved by the Department Chair; MATH 152; any 200-level or above Math course; ASTR 111, ASTR 112, any Biology (except BIOL 301 and BIOL 302); any Chemistry; any Geology (except GEOL 110 and 205), any Physics, or PHSC 301.

Within a single concentration, courses used to meet the B.S. Requirements cannot be used to meet any other requirement of that concentration.

Students with more than one concentration and/or major should evaluate each independently.

Offered Only In Fall Offered only in Spring Fall and/or Spring offerings are expected, but not guaranteed.



* **ITEC 225:** Prereq. ITEC 109 (>= C) or ITEC 120 (>= C). CSAT and ISAS majors should take 120 prior to 225.

Courses in bold boxes must be passed with a grade of "C" or better

Major GPA Requirement: 2.0 in all ITEC, MATH, STAT courses applied to the major, excluding courses used to meet the B.S. Requirement.

Core Curriculum:
 MATH 151 is approved for Core Curriculum credit in the Mathematical Sciences.

Students in the IT Department are required to take a Natural Science course to fulfill the College Core B Mathematical or Natural Sciences Requirement.