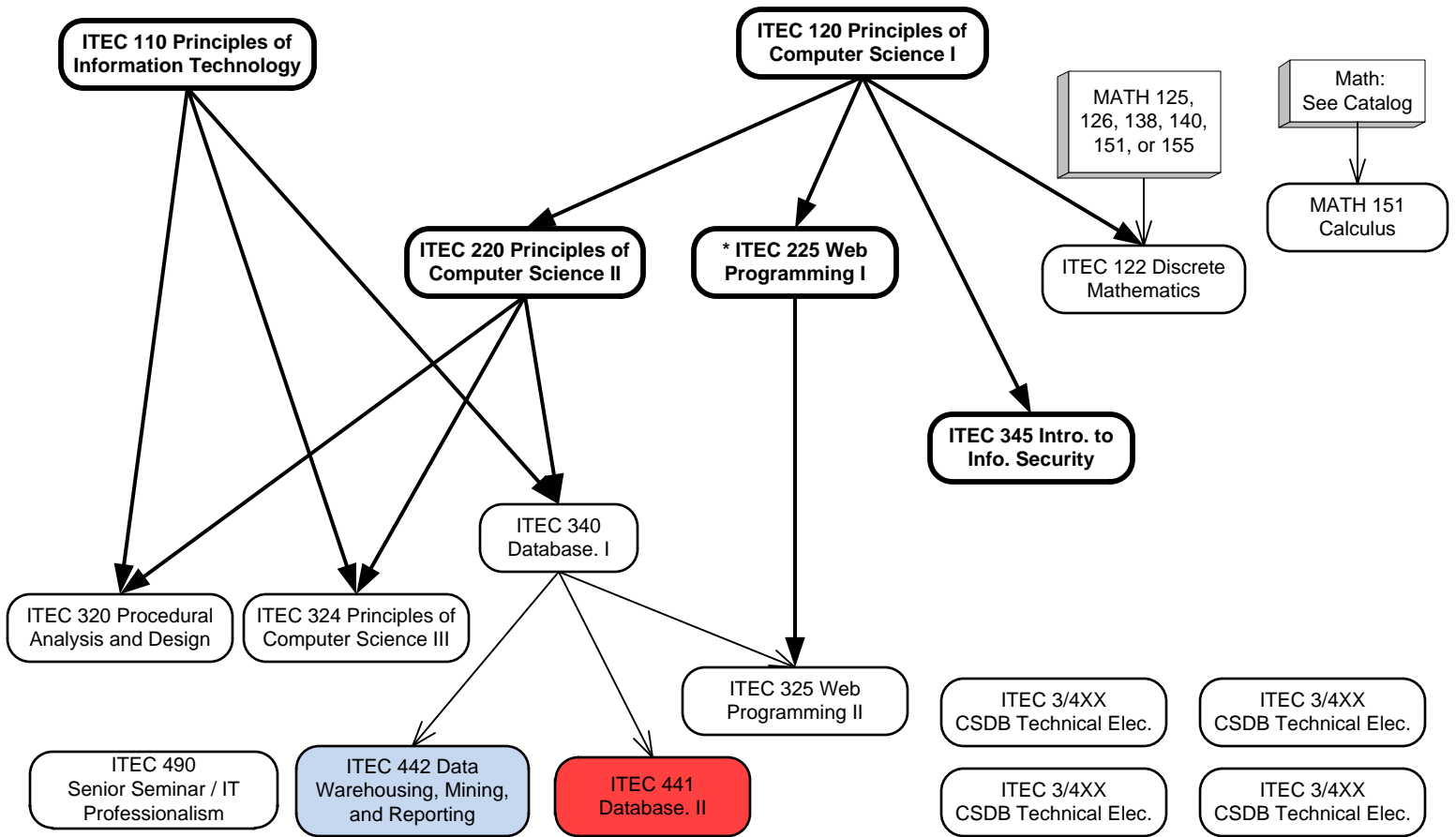


# Database Concentration 2012 - 2013



**CSDB Technical Electives:** 12 hours of 300 or 400 level ITEC courses (except ITEC 301, 304, 400, 493, 498).

Offered Only In Fall Offered only in Spring

**B.S. Requirements (6-8 hours):**  
 Any 300 level or above ITEC courses (except 301, 304, 400); MATH 152; any 200 level or above Math course; any science from the following list: ASTR 111, 112; any Biology (except BIOL 301, 302); any Chemistry; any Geology (except GEOL 110, 205); any Physics, PHSC 301.

Within a single concentration, courses used to meet the B.S. Requirements cannot be used to meet any other requirement of that concentration.

Prerequisite  $\longrightarrow$   
 Prerequisite: must have  $\geq$  "C" to advance  $\longrightarrow$

**\* ITEC 225:** Prereq. ITEC 109 ( $\geq$  C) or ITEC 120 ( $\geq$  C). CSAT and ISAS majors should take 120 prior to 225.

**Courses in bold boxes must be passed with a grade of "C" or better**

Major GPA Requirement: 2.0 in all ITEC, MATH, STAT courses applied to the major, excluding courses used to meet the B.S. Requirement.

**Core Curriculum:**  
 MATH 151 is approved for Core Curriculum credit in the Mathematical Sciences.

Students in the IT Department are required to take a Natural Science course to fulfill the College Core B Mathematical or Natural Sciences Requirement.